

162 i PH VDE Insulated screwdriver for Phillips screws, PH 2 x 100 mm

Kraftform Plus – Series 100 VDE



EAN:	4013288027313	Size:	205x37x37 mm
Part number:	05006154001	Weight:	88 g
Article number:	162 i PH VDE	Country of origin:	CZ
		Customs tariff number:	82054000

- Insulated blades for secure work at 1,000 volts
- Smooth hard zones for high speed turning, soft grip zones for high torque transfer
- "Take it easy" tool finder: colour coding according to profile and size
- Hexagonal anti-roll feature against rolling away
- Lasertip tips for more secure fit in the screw head

Wera VDE screwdrivers with multi-component Kraftform handle for fast and smooth work: Hard handle zones for high working speeds, while soft handle zones guarantee a high torque transfer. Individually tested at 10,000 V for safe working at the approved voltage of 1,000 V. The tips of Wera Lasertip screwdrivers are microscopically roughened with laser beams. This rough surface "bites" into the screw head and unintentional slipping is a thing of the past. "Take it easy" tool finder with colour coding by profile and size stamping - for quick and easy identification of the required tool. The hexagon anti-roll protection avoids bits from rolling away annoyingly at the workplace.



Web link

https://products.wera.de/en/screwdrivers_kraftform_plus_series_100_vde_162_i_ph_vde.html

Wera - 162 i PH VDE
05006154001 - 4013288027313

Wera Werkzeuge GmbH
Korzter Straße 21-25
D-42349 Wuppertal
Tel: +49 (0)2 02 / 40 45-0
E-Mail: info@wera.de

Kraftform Plus – Series 100 VDE

Individually tested



The individual testing at 10,000 volts, in accordance with IEC 60900, ensures safe working with loads up to 1,000 volts.



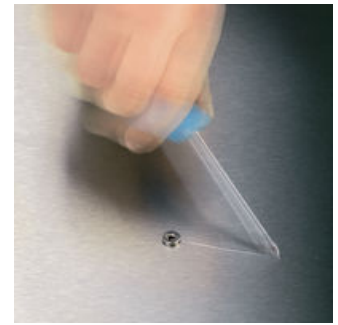
The individual testing at 10,000 volts, in accordance with IEC 60900, ensures safe working with loads up to 1,000 volts.

Impact strength test



Impact strength tested at -40°C, guaranteeing safety even under extreme conditions.

Lasertip prevents slipping out



It happens time and time again that the tip slips out of the screw head when screwdriving, sometimes damaging valuable surfaces or even causing injury. The tips of the Wera Lasertip screwdrivers are microscopically roughened by means of a laser. This rough surface literally "bites" itself firmly into the screw head. Slipping out becomes a thing of the past.

Reduced contact pressure



Wera Lasertip reduces the contact pressure required and enhances force transfer - meaning less screwdriving effort is required. Screwdriving becomes safer and easier.

Multicomponent Kraftform handle



Wera produces the Kraftform handle out of several materials with different properties. A resistant plastic is used for the core which ensures that the blade is held securely even under high strain. A softer material is used for the coloured soft zones, which provides high frictional resistance and allows the transfer of high forces - resulting in less required screwdriving effort. The red sections with their hard surfaces prevent any "sticking" of the hand to the handle, making rapid repositioning of the hand possible.

Prevents hand injuries



The outstanding design of the Kraftform handle that fits perfectly into the hand prevents hand injuries such as blisters and calluses.

Rapid hand repositioning



The hard materials used for the handle ensure rapid hand repositioning without any danger of the skin "sticking" to the handle. The surrounding hard zones with large diameters glide like wheels through the hand.





Web link

https://products.wera.de/en/screwdrivers_kraftform_plus_series_100_vde_162_i_ph_vde.html

Wera - 162 i PH VDE
05006154001 - 4013288027313

Wera Werkzeuge GmbH
Korzerter Straße 21-25
D-42349 Wuppertal
Tel: +49 (0)2 02 / 40 45-0
E-Mail: info@wera.de

Further versions in this product family:

		 mm	 mm	 inch
05006150001 ¹⁾	PH 0	80	81	3 1/8"
05006152001	PH 1	80	98	3 1/8"
05006153001	PH 1	150	98	6"
05006154001	PH 2	100	105	4"
05006159001	PH 2	200	105	8"
05006156001	PH 3	150	112	6"
05006158001 ¹⁾	PH 4	200	112	8"

1) without Lasertip

Web link

https://products.wera.de/en/screwdrivers_kraftform_plus_series_100_vde_162_i_ph_vde.html

Wera - 162 i PH VDE
05006154001 - 4013288027313

Wera Werkzeuge GmbH
Korzter Straße 21-25
D-42349 Wuppertal
Tel: +49 (0)2 02 / 40 45-0
E-Mail: info@wera.de